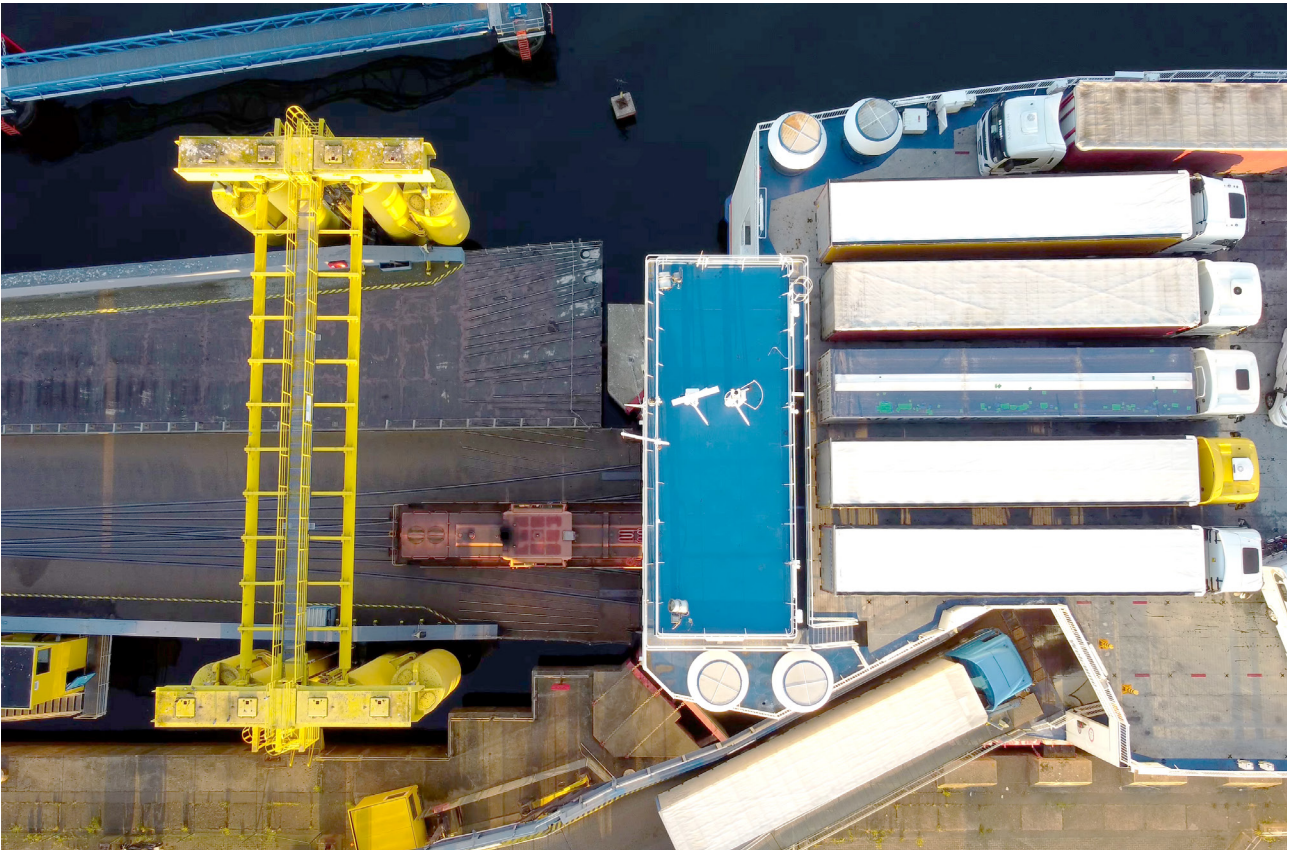


SAFE LOADING OF GOODS ONBOARD

A safer journey with Stena Line




Stena Line



SAFE LOADING OF GOODS ONBOARD

Guiding traffic in our ports and loading cargo onboard involves rigorous safety procedures. We have developed strategic routines to minimise the risk of collisions for loading vessels and maximising safety for parking goods.

By combining human presence and technology for our operations we can optimise safety from different perspectives. Our ports and tug masters are equipped with cameras to enhance visibility for security concerns or damages.

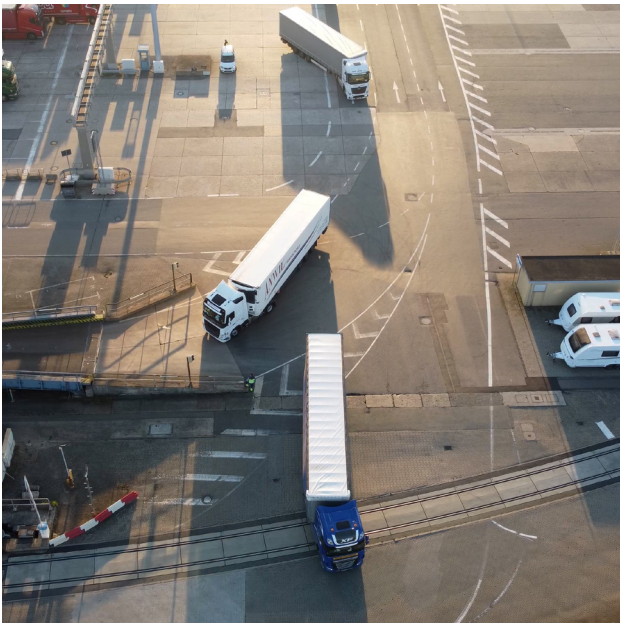
Additionally, coordinated teams operate at various levels of responsibility to provide a secure environment for conducting business.

COLLECTING DETAILS DURING BOOKING

During the booking stage, we gather crucial information for our safety procedures. Customers provide details about the cargo and weight. If there are any specialised goods such as hazardous, this information becomes essential for planning cargo placement on the vessel.

Before loading begins, all goods must be assigned a parking spot on the vessel. Several factors come into play during this stage; the number of units registered for boarding, the cargo contents, and the weight of each unit are a few examples. Proper weight distribution across the ship is a factor to maintain balance at sea and the cargo contents undergo close evaluation to assess potential risks.

“Specialised goods have a unique set of rules for parking. Firstly, certain shipments are prioritised to be placed outside on the upper decks where there is no roof limiting the space. Secondly, we carefully check and systematically place the contents to ensure that no two potentially hazardous materials are adjacent. If there’s any risk, we position them opposite sides to prevent contact.”, says **Josef Stöök, Able Seafarer on Stena Vinga.**



ABOUT ABLE SEAFARER

As able seafarer, you are assisting in the safe and efficient completion of many different tasks, including planned maintenance jobs, operational duties, mooring and unmooring, overseeing loading and unloading of vehicles, marshalling traffic and general maintenance of the vessel to keep her fresh, clean and ready for another sailing.

MINIMISING RISKS DURING LOADING

To ensure the safe loading of cargo onboard, we prioritise minimising the risk of accidents in our ports. Preventing collisions between vehicles and people is of utmost importance. In areas with high traffic, the risks must be closely monitored and minimised by strict rules.

“We have segregated walkways and protected walkways for pedestrians, to prevent any incidents involving vehicles.”, says **Peter Quigley, Group Head of Port Safety**. “Additionally, as an extra safety measure, everyone is required to wear high-visibility clothing once they step out of their vehicle”.

NAVIGATING WITH HUMANITY

For a successful boarding procedure, body language, hand signals and sound of the whistles play an important role. Josef and his colleagues are among the staff who assist the drivers to the right parking spots.

Josef explains, “Body language is a universal form of communication that reveals most of what you need to know. This applies equally to drivers in lorries or in passenger cars. When someone drives slowly or appears uncertain, we interpret this as a lack of direction. To guide them to their designated parking spot, we use both our whistles and body movements”.

The human aspect is undeniably essential in our safety procedures. Technology is a compliment to everything we do. Cameras are strategically placed throughout our ports, on our tug masters, on deck and onboard to monitor operations.

However, this technology does not replace the personal connection we have with our customers and the level of service we provide.



A SAFER JOURNEY WITH STENA LINE

Learn more about our work with safety and security
at stenalinefreight.com




Stena Line